

**INTRODUCTION**

**LEHANN  
WALLACE**

**DIRECTOR AREA G RDN**



**REGIONAL  
DISTRICT  
OF NANAIMO**


# Overview Map

TOWN OF  
QUALICUM BEACH


The image shows a partial overview map of the Town of Qualicum Beach. The map features a light beige background with various colored lines representing roads and boundaries. A prominent blue line runs vertically on the left side. A grey line follows the coastline. Several green shapes, including a large one on the left and smaller ones in the center, are highlighted. The text 'TOWN OF QUALICUM BEACH' is centered in the upper portion of the map, with a thin horizontal line underneath it. The map is partially cut off at the bottom by a solid black bar.



# RDN AREA G BUDGET - RDN.BC.CA/FINANCIAL-REPORTS



## 2021 REGIONAL DISTRICT OF NANAIMO PROPERTY TAXES



**Electoral Area G**  
RIVERS EDGE, FRENCH CREEK,  
DASHWOOD, SAN PAREIL

**REGIONAL DISTRICT OF NANAIMO  
PROPERTY TAXES**

You have just received your 2021 property tax notice from the Province. The Province collects taxes for schools, roads, policing, hospital and regional district services among other taxes. The Regional District of Nanaimo (RDN) receives a lump sum payment from the Province in August each year. This lump sum payment goes directly toward the RDN services provided in your area.

**SERVICES**

The Regional District of Nanaimo provides a broad range of services to its residents, with the exception of road maintenance and policing. The services provided by the RDN include the following examples:

**REGIONAL**

- Solid Waste Management
- Regional Parks
- Regional Growth Strategy
- 911 Services
- Liquid Waste Management Planning
- Drinking Water/Watershed Protection
- Search & Rescue Contribution Services
- Community Grants
- Administration

**SUB-REGIONAL**

- Transit
- Wastewater Treatment
- Community Planning
- Economic Development
- Recreation Centres
- Community Justice
- Contribution Services
- Bylaw Enforcement
- Building Inspection
- Emergency Planning

**LOCAL**

- Fire Protection
- Water and Sewer Utilities
- Community Parks
- Street Lighting

**NANAIMO REGIONAL HOSPITAL DISTRICT**

The Nanaimo Regional Hospital District (NRHD) shares the same boundaries, directors and administrative staff as the Regional District of Nanaimo. The NRHD provides capital funding for:

- Nanaimo Regional General Hospital
- Dufferin Lodge
- Eagle Park Lodge
- Trillium Lodge
- Oceanside Health Centre

Capital funding is cost-shared with the province on a 60/40 basis with the NRHD's portion being 40 per cent. Island Health is responsible for delivering health care services on Vancouver Island. Island Health pools both Provincial and NRHD funding, along with other sources such as foundations, to maintain, improve and build health care facilities.

The NRHD has adopted a 2021 budget of \$14.0 million resulting in a tax levy of approximately \$21.15 per \$100,000 of assessment. The 2021 budget includes \$3.6 million for capital equipment and minor projects, \$0.1 million for administration expense, \$4.2 million for debt servicing on major capital projects and a \$4.3 million contribution into reserves to save for future projects such as a new patient tower at Nanaimo Regional General Hospital. Current capital projects planned and underway include a new MRI, endoscopy equipment, a boiler plant upgrade, an Intensive Care Unit redevelopment, Chemotherapy Clinic, Pharmacy Expansion, SPECT CT Scanner, and Meal Assembly and Delivery System at the hospital.



**INQUIRIES ON PROVINCIAL TAXATION  
AND YOUR PROVINCIAL TAX NOTICE:**

Please contact Surveyor of Taxes  
Toll-free: 1-888-355-2700  
Or: 250-387-0555


The Property Taxes website has information on homeowner grants, the tax deferral program as well as other valuable tax information.  
[www.sbr.gov.bc.ca/rpt](http://www.sbr.gov.bc.ca/rpt)

RDN services are included on your municipal or provincial tax notice.

**Get Involved RDN!**

**FOR MORE INFORMATION ON  
RDN SERVICES PROVIDED OR TO  
GET INVOLVED VISIT**

[getinvolved.rdn.ca](http://getinvolved.rdn.ca)  
or call RDN Finance  
Toll-free: 1-877-607-4111  
Or: 250-390-4111



**REGIONAL DISTRICT OF NANAIMO (RDN) REGION-WIDE 2021 APPROVED BUDGET**

**WHERE DOES THE MONEY COME FROM?**

Total: \$200,121,881

**WHERE DOES THE MONEY GO?**

Total: \$200,121,908

EXPENDITURES FOR 2021	
THESE ARE THE RDN'S LARGEST CAPITAL INVESTMENTS IN THE COMING YEAR:	
Wastewater Treatment	\$28,819,306
Parks & Recreation	\$13,490,494
Fire Departments	\$7,025,179
Transit	\$5,667,190
Solid Waste / Regional Landfill	\$4,967,813
Water Services	\$4,088,464
Corporate Services	\$1,579,790

**THE RDN IS WORKING ON MAJOR PROJECTS THAT MAY IMPACT YOUR AREA. THESE INCLUDE:**

- Transit Service Expansion – 2,500 hours
- Expansion of Transit Exchanges
- Fire Services Delivery Model Review
- Parkland Acquisitions
- Ravensong Pool Expansion Planning
- Benson Creek Falls Regional Park Access Improvements
- Electronic Data Records Management
- Regional Growth Strategy Review
- French Creek Pollution Control Centre Project and Odour Control Upgrades
- Social Needs Assessment Study
- Corporate Climate Neutral 2032 Plan and Strategy
- Regional Housing Strategy
- Drinking Water and Watershed Protection Renewed Master Plan

**Electoral Area G  
2021 APPROVED  
REGIONAL BUDGET**

	2021	2020
Area G contribution to RDN		
General Services property taxes total	\$3,306,224	\$3,221,204
Estimated RDN General Services tax rate per \$100,000 of assessment*	\$120.39	\$120.33
Average residential dwelling assessment value**	\$657,246	\$643,098
Average Area G General Services property tax amount***	\$827.89	\$813.66
Change from prior year	1.7%	

**HOW THE FUNDS ARE SPENT IN YOUR AREA**

Community & Regional Recreation & Culture	37%
Community & Regional Development	15%
Vancouver Island Regional Library	15%
Community & Regional Parks	11%
Administration & Regional Grant Services	9%
Public Safety & Emergency Services	8%
Transit Services	5%
Solid Waste Management	2%

NOTES: You may also have specific local taxes included on your tax notice for services such as your fire department. Local services taxes are applied on an assessment basis only to properties in the specific area.  
\* This is an estimate based on the 2021 Completed Roll Values and does not include the provincial collection fee of 5.25 per cent. Your actual tax notice will be slightly different.  
\*\* Average residential values are based on BC Assessment 2021 Completed Roll Values and may vary as a result of revisions to the roll.  
\*\*\* Includes Parcel Taxes of \$36.63 (2020: \$39.81) which are levied at the same amount for each property in the specified service area.





---

# WATER, PARKS, RIVER MAPPING

2020-2021 IN REVIEW

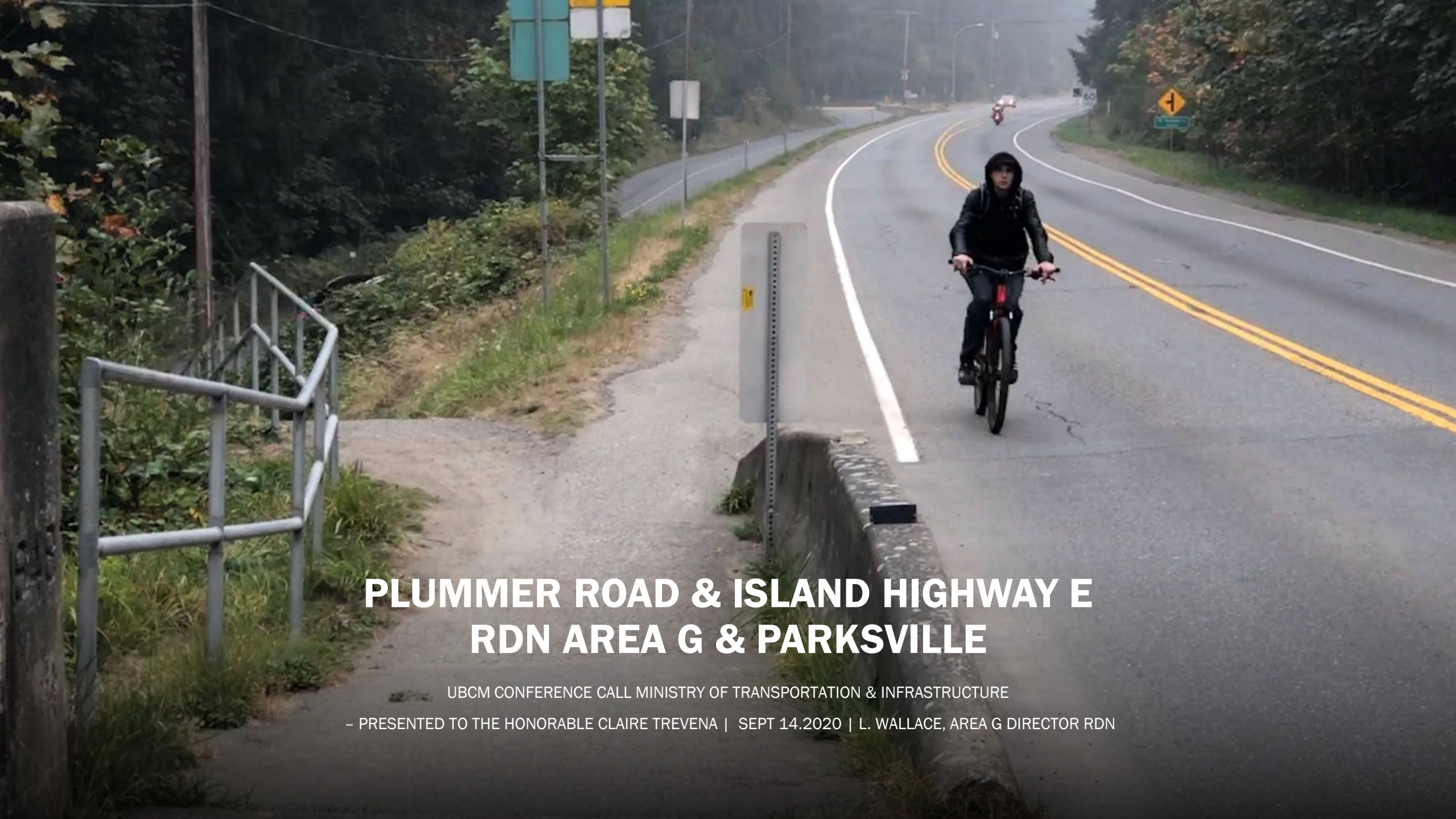


## RDN SERVICES – SAN PAREIL

- The RDN has 109 unique services and each service is paid for by the users of the service only.
- Area G has 25 Area-Wide services that are based on a wide range of parcel taxes, assessment, population and/or flow rates.
- The regional and subregional services allow for collaboration between the 4 member municipalities and 7 Electoral Areas while providing local government services areas for electoral areas.
- The entire RDN is governed by a Board of 19 members from south of Nanaimo, Gabriola Island and has far up island as Deep bay.
- San Pareil in addition has 3 unique services that include Water Supply, Fire protection, fire services (supplied by Parksville and mutual aid), rural street lighting.
- The RDN has no jurisdiction for natural resources, roads, drainage, emergency response.







# PLUMMER ROAD & ISLAND HIGHWAY E RDN AREA G & PARKSVILLE

UBCM CONFERENCE CALL MINISTRY OF TRANSPORTATION & INFRASTRUCTURE

- PRESENTED TO THE HONORABLE CLAIRE TREVENA | SEPT 14.2020 | L. WALLACE, AREA G DIRECTOR RDN



---

# PLUMMER ROAD & ISLAND HIGHWAY EAST OVERVIEW

1. The Regional District of Nanaimo has prioritized the need for Active Transportation infrastructure in this corridor.
2. Map Overview of Uniqueness of the Locale and Conditions.
3. History of infrastructure development investments.
4. Discussion.



## REGIONAL BENEFIT

- “Bringing connectivity from the City of Parksville as well as electoral Area G in a safe and inclusive manner I think would be a great investment for the region.”
- The RDN and City of Parksville have discussed various options to establish the pedestrian/cycling link since 2011.



*Hwy. 19A/Plumber Rd. intersection just south of Parksville has been the source of recent discussions between the province and RDN to include amenities for pedestrians and cyclists.*

PEDESTRIAN PATH

By Ian Holmes

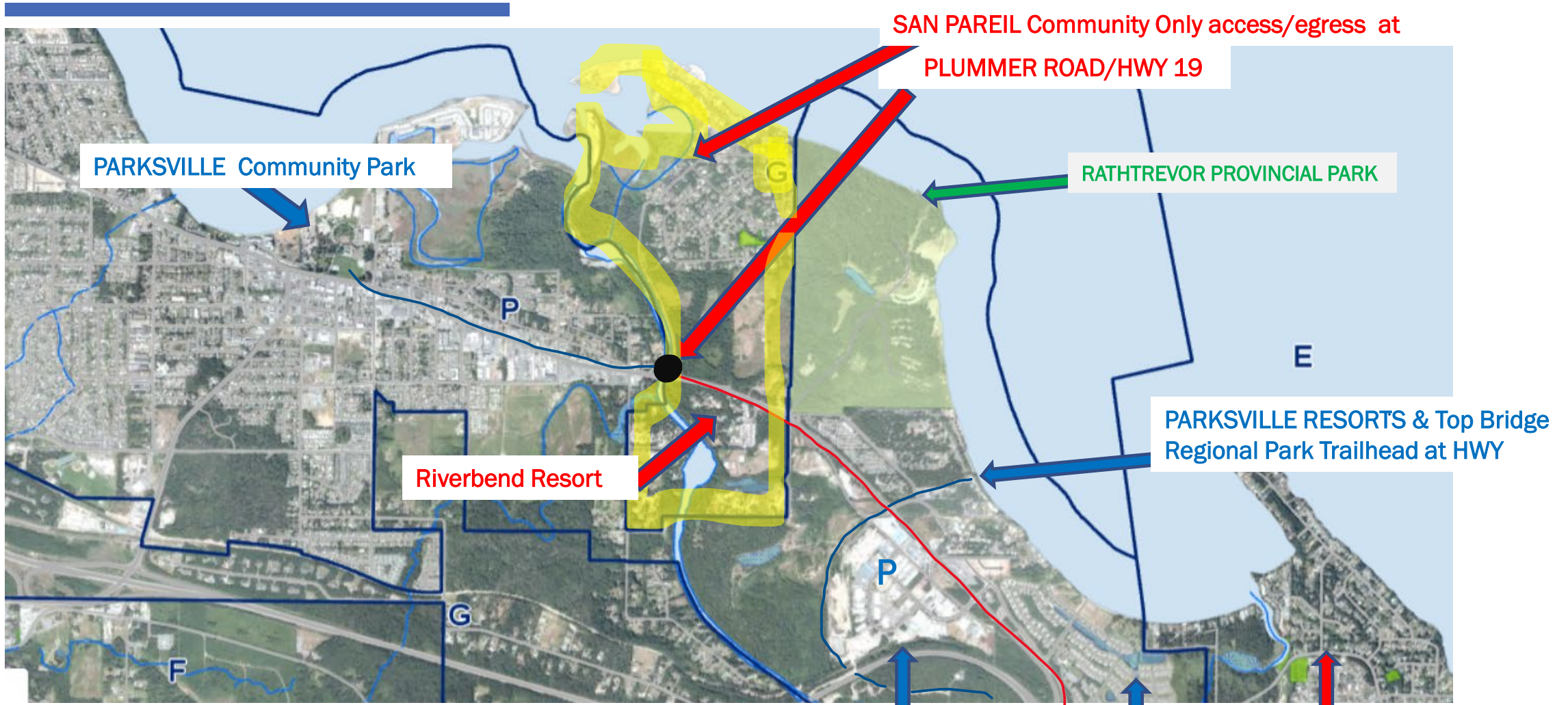
## RDN elevates push for pedestrian link between Parksville and Rathrevor Beach

May 30, 2020 10:20 AM

PARKSVILLE — Officials with the Regional District of Nanaimo are building a case to improve pedestrian and cycling access between Parksville and Rathrevor Beach Provincial Park.

The RDN board has asked the province to include active transportation amenities for pedestrians and cyclists to be included in future upgrades to highway 19A at Plumber Rd., near the entrance to the prized provincial park.





SAN PAREIL Community Only access/egress at  
PLUMMER ROAD/HWY 19

PARKSVILLE Community Park

RATHTREVOR PROVINCIAL PARK

Riverbend Resort

PARKSVILLE RESORTS & Top Bridge  
Regional Park Trailhead at HWY

PARKSVILLE Industrial Park

CRAIG BAY Residential Community

PARKSVILLE Residential, Resorts Developments

- Rural Area G of the RDN dissects Parksville in two.
- Plummer Road within RDN is the root cause of convergence issues and pinch point for large area of residential, commercial and tourism traffic at Orange Bridge.



# CONDITIONS

- *“Active transportation elements, including facilities for pedestrians and cyclists, are not integrated effectively along the corridor. The corridor, despite providing access to several adjacent recreational land-uses, trails and resorts, does not provide for dedicated cycling lanes or side-walks.”* ~ MoTI Commissioned Report. [Oct 2017 676765 - Task W07](#)
- Highway 19A / Plummer Road: an un-signalized, full-movement, skewed T-intersection with dedicated deceleration and left-turn lanes and barriers along Highway 19A.
- Steep grade and low visibility along edge of highway at the Orange Bridge which poses a significant risk to cyclists and pedestrians.
- This corridor is how many unassuming tourists travel between Rath Trevor Provincial Park and Resorts area, along with a growing number of residents and commercial traffic through Electoral Area G to The City Parksville.







---

## HISTORY

- **18 October, 2017** Completed study: Highway 19A: Rath Trevor Provincial Park Planning to Parksville, BC
- **Sept 2019** – Final survey completed of Plummer Road access.
- **February 2020** – RDN prioritizes pedestrian access through Regional Parks and Trails service for this location and corresponds with the Ministry of this priority.
- **2020** – Active Transportation grant application suggested as response **however this is not feasible without the realignment of Plummer Road first.**



## CONCLUSION

- RDN Active Transportation planning cannot commence until Plummer Road design plan is completed.
- There are significant investments made to study and survey this access to date.
- Steep grade and visibility along the edge of highway at the Orange Bridge and pose a significant risk to cyclists and pedestrians.
- This area is a unique area between The Regional Area G HWY Corridor as only access between severed Parksville jurisdictions and population.
- **ASK:** That the Plummer Road & Island Highway E. Access Plan proceed within the 2021/2022 Fiscal plan; And then that the plan include Pedestrian Access Collaboration Opportunities between the RDN, Parksville, Rath Trevor Provincial Park and MoTI for completion within 5 years.





---

**THANK YOU FOR  
YOUR  
CONSIDERATION.**

**~ LEHANN WALLACE  
RDN ELECTORAL AREA G DIRECTOR**







# QUESTIONS & DISCUSSION