



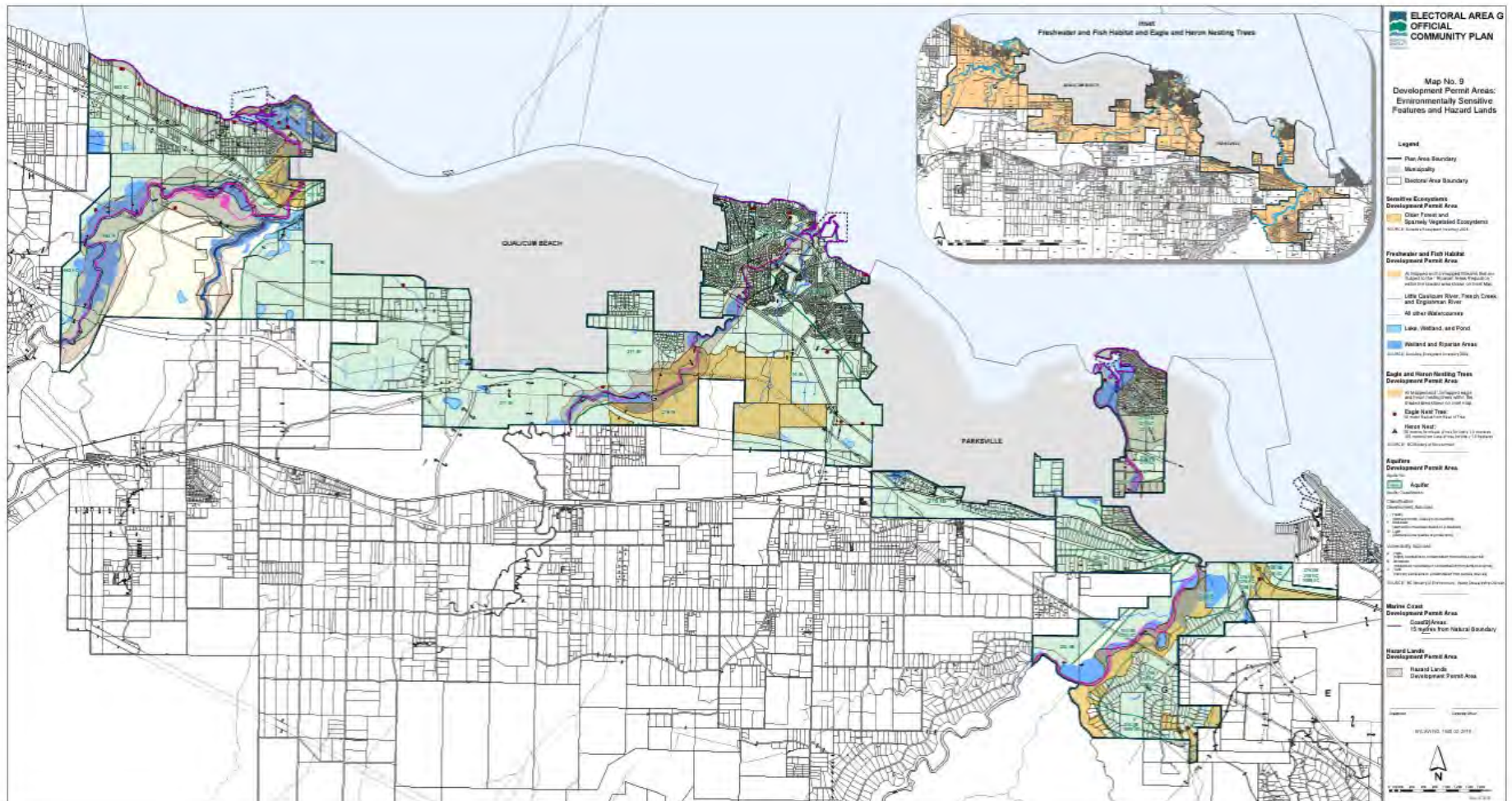
JUNE 15, 2023

**LEHANN
WALLACE
AREA G DIRECTOR**

**SHOREWOOD SAN PAREIL OWNERS'
& RESIDENTS' ASSOCIATION
ANNUAL GENERAL MEETING**

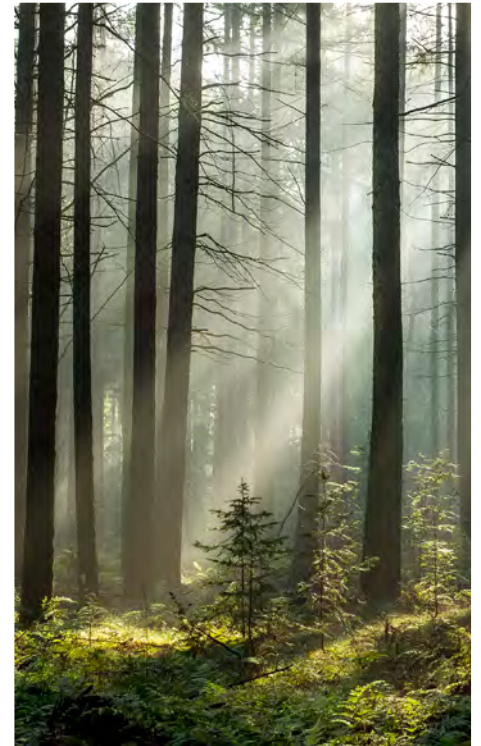
AGENDA

- RDN & Area G Overview
- Plummer Road Update
- Maple Lane Park Update
- RDN- Get Involved
- Q & A



REGIONAL DISTRICTS OVERVIEW

- **BC is divided into 27 regional districts to provide local governance for unincorporated areas.**
RDN is #5th largest by Population
- **Each regional district includes a combination of municipalities and electoral areas.**
RDN has 106 services, Area G contributes to 40 services.
- **All Regional Districts are required to provide mandatory services determined by the province to their members as a region.**
Liquid Waste, Solid Waste, Administration, Electoral Areas Administration
- **Regional Districts have lesser authority and lower representation than Municipalities and provide local government for Unincorporated Areas via Federation Agreements and Bylaws.**



RDN GOVERNANCE, POPULATION AND VOTING STRENGTH

2021 CENSUS – POST 2022 ELECTION STRUCTURE




CITY OF NANAIMO
THE HARBOUR CITY

99,863



City of Parksville

13,642



TOWN OF QUALICUM BEACH

9,303



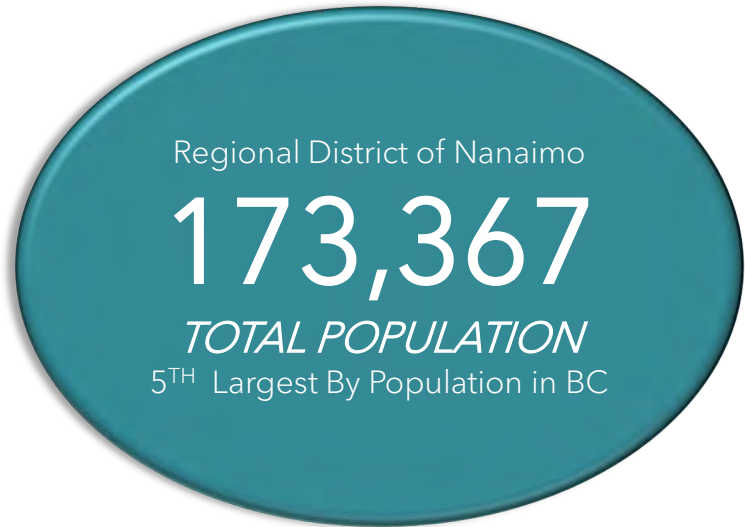
Lantzville

3,817



REGIONAL DISTRICT OF NANAIMO

43,742



Regional District of Nanaimo

173,367

TOTAL POPULATION

5TH Largest By Population in BC



RDN AREA G STATS- 2021 Census

- 8,109 Residents all receiving 29 Services from the RDN; And a portion receiving 11 shared services with other areas
- Area G is Second largest EA in RDN by population (Area F has +107 with pop of 8216)
- 7.7% growth since 2016
- 98% residential
- Population Density per square km= 164.4 (compared to Area F of 31.1, E 90.4, H 15.5)
- 9 separate areas including {Englishman River, Martindale, San Pareil}, {Allsbrook Rd} and {Forneau Way, Wildgreen Way, Coldwater Road}, {French Creek}, {Bird Named Streets south of Qualicum Airport, Hilliers}, {Surfside}, {Little Qualicum Riverside}, {Dashwood}.

RDN SERVICES (106) & PARTICIPANTS PAGE 7 & 8 (PDF)

RDN SERVICES AND PARTICIPANTS

X = Entire Electoral Area or Municipality

O = Portion of Electoral Area or Municipality

	RDN SERVICES AND PARTICIPANTS										Requisition Allocation	
	X = Entire Electoral Area or Municipality					O = Portion of Electoral Area or Municipality						
	NANAIMO	PARKSVILLE	QUALICUM BEACH	LANTZVILLE	AREA A	AREA B	AREA C	AREA E	AREA F	AREA G	AREA H	
Administration	X	X	X	X	X	X	X	X	X	X	X	Assessment
Community Grants	X	X	X	X	X	X	X	X	X	X	X	Assessment
Port Theatre Contribution				X	X	X	X	X	X	X	X	Assessment
Area A				X								Assessment
Area B					X							Assessment
Area C						X						Assessment
Area E							X					Assessment
Southern Community Search & Rescue Contribution	X	X	X	X	X	X	X	X	X	X	X	Population
Northern Community Search & Rescue Contribution							X	X	X	X	X	Population
Northern Community Marine Search & Rescue							X	X	X	X	X	Assessment
Contribution		X	X		X	X	X	X	X	X	X	Assessment
Vancouver Island Regional Library							X	X	X	X	X	50% Population/50% Assessment
Southern Community Restorative Justice & Victim Services					X	X	X					Assessment
Northern Community Crime Prevention and Community Justice		X	X				X	X	X	X	X	Parcel tax
Electoral Area (Community) Planning				X	X	X	X	X	X	X	X	Assessment
Regional Growth Management	X	X	X	X	X	X	X	X	X	X	X	50% Population/50% Assessment
House Numbering				X	X	X	X	X	X	X	X	Assessment
Southern Community Economic Development					X	X	X	X	X	X	X	Assessment
Northern Community Economic Development							X	X	X	X	X	Parcel tax
Hazardous Properties (Innuance control)		X	X	contract	X	X	X	X	X	X	X	Assessment
Unsanitary Premises				contract	X	X	X	X	X	X	X	Assessment
Southern Community Transit				X	X							Usage
Northern Community Transit	X	X	X	X	X					X	X	40% Population/60% usage
Galbraith Tax Saver						O						Assessment
Galbraith Transit Contribution							X					Assessment
Galbraith Emergency Ward (Descanso Bay)							X					Assessment
Solid Waste Disposal (Landfills)	X	X	X	X	X	X	X	X	X	X	X	50% Population/50% Assessment
Recycling and Compostory (Garbage) Collection	X	X	X	X	X	X	X	X	X	X	X	Assessment
Animal Control				contract	X	X	X					Assessment
Areas A,B,C												Assessment
Areas E,G,H							X	X	X	X		Assessment
Area F								X	X	X		Assessment
Regional Parks and Trails	X	X	X	X	X	X	X	X	X	X	X	50% Population/50% Assessment
Community Parks				X	X	X	X	X	X	X	X	Assessment
Northern Community Recreation	X	X					X	X	X	X	X	Assessment/Quarantails by Usage
Openaside Place Arena							X	X	X	X	X	50% Assessment/50% Usage
Ravensong Aquatic Centre	X	X					X	X	X	X	X	50% Assessment/50% Usage
Northern Community Recreation				X	X	X	X					Assessment
Electoral Area A Recreation & Culture					X							Assessment
Galbraith Island Rec Commission						X						Assessment
Wastewater-Southern	O			O								Flow data
Duke Point Sewer (funds Duke Point PCC)	O	X		O								Assessment
Liquid Waste Management Planning	X	X	X	X	X	X	X	X	X	X	X	50% Population/50% Assessment
Wastewater-Northern		O	O									Flow data
Wastewater-Southern												Flow data
Wastewater-Northern Sewer Collection							O					Parcel tax
Fairwinds Sewer Facilities (B&C collection)							O					Parcel tax
French Creek Sewer								O				Parcel tax
Pacific Slopes Sewer									O			Parcel tax
Surfside Sewer									O			Parcel tax
Cedar (collection & debt)					O							Parcel tax
Balclay Crescent Sewer									O			Parcel tax

Construct of taxation apportionment. Assessment most common



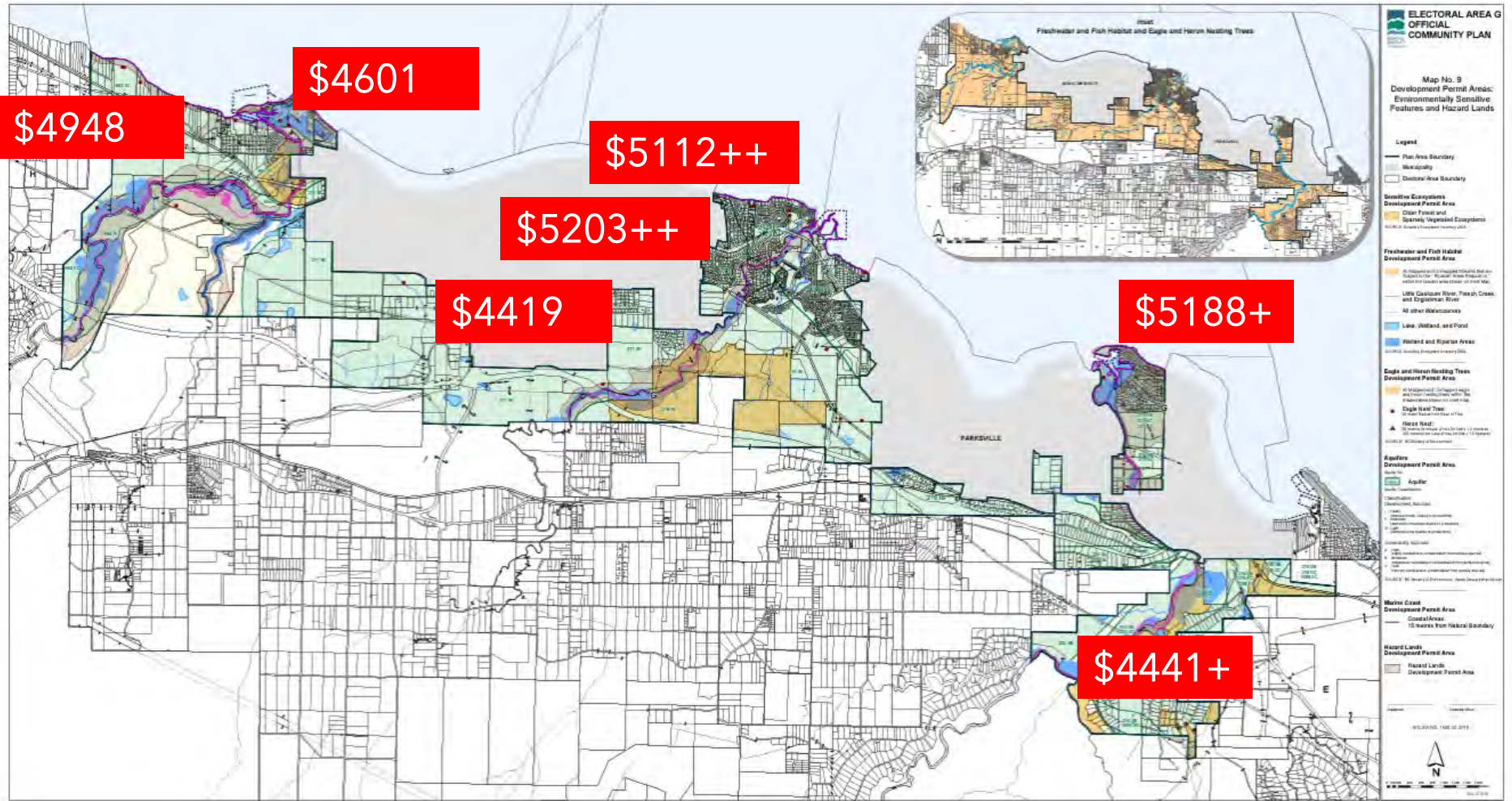
	RDN SERVICES AND PARTICIPANTS										Requisition Allocation	
	X = Entire Electoral Area or Municipality					O = Portion of Electoral Area or Municipality						
	NANAIMO	PARKSVILLE	QUALICUM BEACH	LANTZVILLE	AREA A	AREA B	AREA C	AREA E	AREA F	AREA G	AREA H	
Hawthorne Rose Sewer Capital Financing										O		Parcel tax
Road Road Sewer Capital Financing										O		Parcel tax
Drinking Water/Watershed Protection	X	X	X	X	X	X	X	X	X	X	X	Parcel tax
Nanose Bay Bulk Water										O		Parcel tax
French Creek Bulk Water										O		Parcel tax
Water Supply												Parcel tax
Surfside										O		Parcel tax
Nanose Bay Peninsula										O		Parcel tax
French Creek										O		Parcel tax
Decourey										O		Parcel tax
San Panel										O		Parcel tax
San Panel (Fire Protection Improvements)										O		Parcel tax
Driftwood Water (debt only)										O		Parcel tax
Englishman River										O		Parcel tax
Melrose Terrace										O		Parcel tax
Whiskey Creek										O		Parcel tax
Westburne Heights										O		Parcel tax
EV Charging Station										O		Assessment
DBG Emergency 911				X	X	X	X	X	X	X	X	Assessment
DBG Emergency 911	X	X										Assessment
Emergency Planning				contract	X	X	X	X	X	X	X	Assessment
Fire Protection												Assessment
French Creek										O	O	Assessment
Errington										O	O	Assessment
Dashwood										O	O	Assessment
Meadowood Fire (debt only)										O	O	Parcel tax
Dashwood Fire Hall (debt only)										O	O	Assessment
Nanose Bay										O	O	Assessment
Wollington Fire & Streetlighting										O	O	Assessment
Parfville Local										O	O	Assessment
Coombs Hillers										O	O	Assessment
Bow Horn Bay										O	O	Assessment
Cadby / Waterloo										O	O	Assessment
Estevan										O	O	Assessment
Nanaimo River Fire										O	O	Assessment
Rural Street Lighting										O	O	Assessment
Street Lighting (separate services)										O	O	Assessment
Fairwinds Street Lighting										O	O	Assessment
Marionagar Street Lighting										O	O	Assessment
Sandpaper Street Lighting										O	O	Assessment
Hwy 4 Intersections Street Lighting										X	O	Assessment
French Creek Village Street Lighting										O	O	Assessment
Englishman River Street Lighting										O	O	Assessment
Noise Control												Assessment
Area A										X		Assessment
Area B										X		Assessment
Area C										X		Assessment
Area E										X		Assessment
Area G										X		Assessment
Lantzville										X		Assessment
Englishman River Stormwater										O	O	Assessment
Cedar Sewer Stormwater										O	O	Assessment

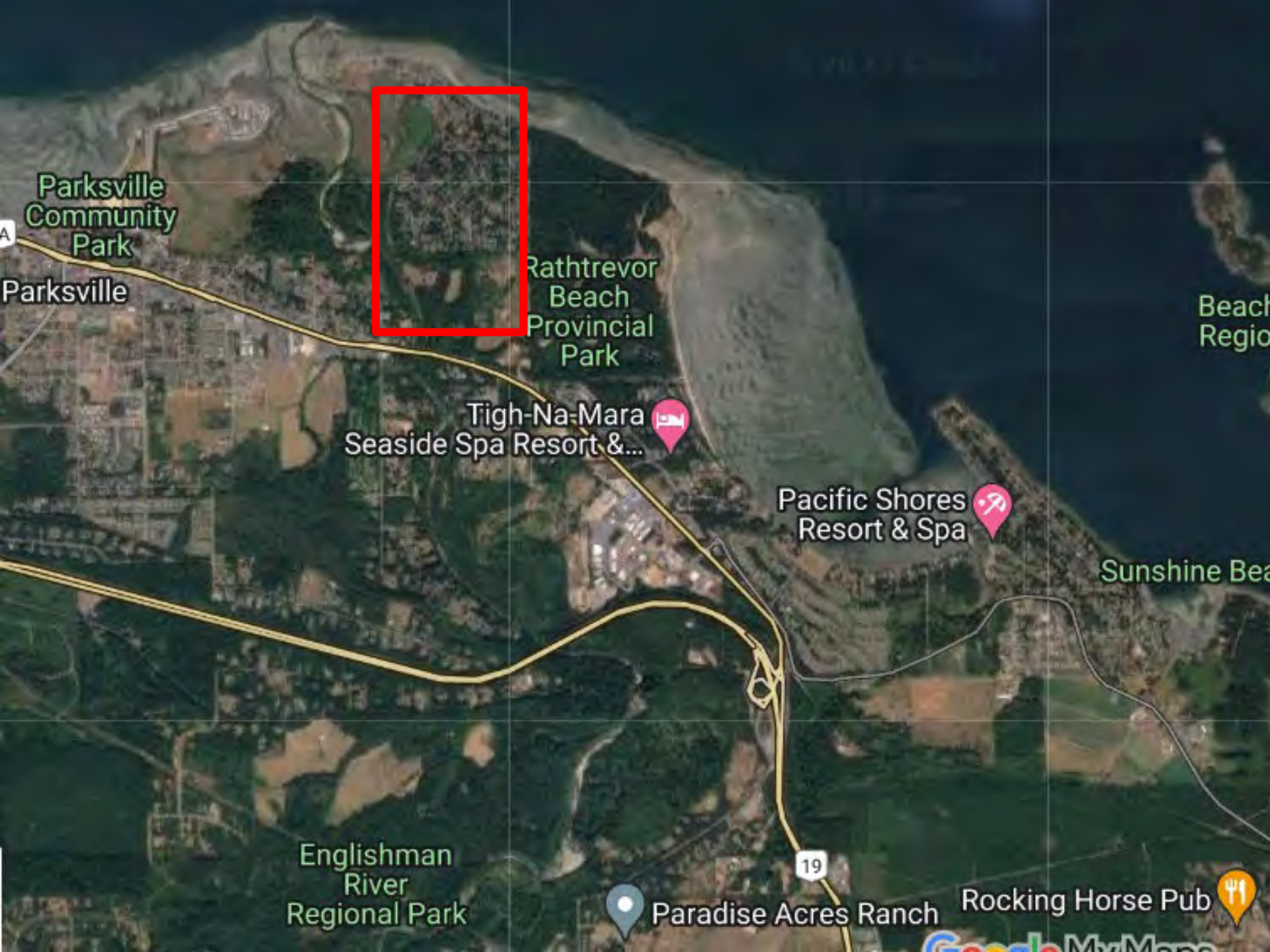
<https://www.rdn.bc.ca/financial-reports>

AREA G DIVERSITY OF SERVICE DELIVERY

2023 Area G average assessed value \$1,024,653

**\$1.2 million assessed value 2023 tax summaries
+ = RDN Water System | ++ = Sewer (rural residential zoning)





Parksville
Community
Park

Parksville



Rathrevor
Beach
Provincial
Park

Tigh-Na-Mara
Seaside Spa Resort &...

Pacific Shores
Resort & Spa

Sunshine Beach

Englishman
River
Regional Park

Paradise Acres Ranch

Rocking Horse Pub

19

Google My Maps

2019

Playground Upgrade funded through Area G Community Works funds grant \$35k

2020

RDN Policy C1-06 Park Amenities Policy implemented

2021

Swingset upgrade funded with Area G Works fund grant \$56K

2022

That a master plan be developed for Maple Lane Community Park that will include engagement with the neighbourhood of San Pareil to guide the planning and placement of future amenities and leverage the RDN Parks Amenity Donation Program and application to future applicable grant programs for select features.

2023

RDN Recreation Grant Received for Maple Lane Community Park

Coming Fall 2023

Master Plan Survey engagement at getinvolved.rdn.ca



MAPLE LANE PARK



**PLUMMER ROAD & ISLAND HIGHWAY E
RDN AREA G & PARKSVILLE**

AREA G REPRESENTATION REVIEW AND UPDATES – PLUMMER ROAD

- **RDN & Parksville ask of Province in 2020:** That the Plummer Road & Island Highway E. Access Plan proceed within the 2020/2021 Fiscal plan; And then that the plan include Pedestrian Access Collaboration Opportunities between the RDN, Parksville, Rath Trevor Provincial Park and MoTI for completion within 5 years.
- **RDN & Parksville ask of Province in 2021:** That Planning be funded in the 2021/2022 MOTI Budget, Surveys completed and progress made to initial design.
- **MOTI Statement via MLA Walker's Office As of June 20, 2022:** "MOTI is expecting to receive the first package for the preliminary design in July. Once the design package is received by MOTI and they have had an opportunity to review it, they will be connecting with the RDN Board of Directors and the City of Parksville to provide a more fulsome update, prior to sharing details publicly."
- **MOTI Meeting with Electoral Area Directors cancelled in Sept 2022** due to election blackout period
- **MOTI Meeting with Electoral Area Directors February 27, 2023** – No update provided



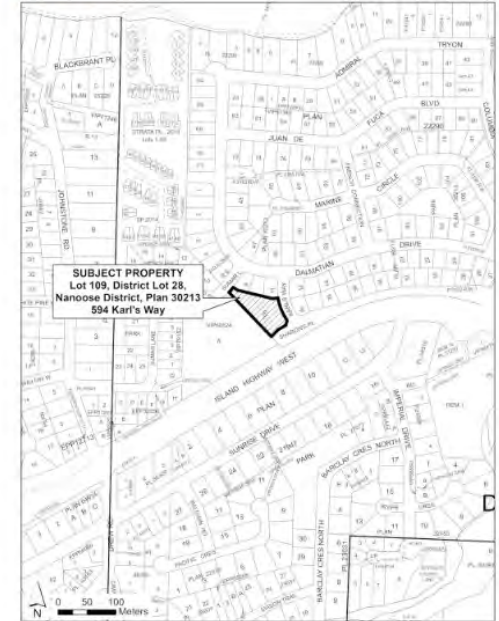
Contribute your ideas and feedback on regional projects and initiatives that matter to you.

Sign up, get involved and join the conversation.

We are listening!

[Register today](#)

Development Application No. PL2022-139



Participate Now

Expanded Organics

Place leaves, grass and small yard trimmings into your organics carts

[Learn more](#)



Beginning to
organics cart
and light

Ravensong Aquatic Centre RDN Bylaw #899

Understand the proposed changes and share your thoughts

[Learn more](#)



Liquid Waste Management Plan Amendment

We are reviewing and updating plan and want your input



Acting for Climate Together

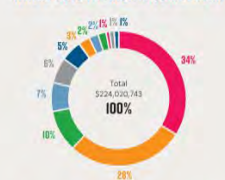
Looking for volunteers to work together to take climate action



GETINVOLVED.RDN.CA



WHERE DOES THE MONEY COME FROM?



WHERE DOES THE MONEY GO?



EXPENDITURES FOR 2023

THESE ARE THE RDN'S LARGEST CAPITAL INVESTMENTS IN THE COMING YEAR:

Wastewater Treatment	\$17,988,857
Recreation & Parks	\$17,808,742
Fire Departments	\$8,500,732
Solid Waste / Regional Landfill	\$7,064,812
Water Services	\$2,449,183
Transit	\$2,332,691
Corporate Services	\$1,844,500

Taxation \$75,425,785 34%	Reserve, Surplus & DCC Transfers \$67,495,390 29%	Grants \$72,135,862 10%	Public Transit \$45,166,862 20%	Solid Waste Management \$11,574,928 14%	Regional & Community Parks \$23,491,901 11%
Recovery of Costs \$15,475,748 7%	Debt Proceeds \$14,363,791 6%	Solid Waste Tipping Fees \$10,649,454 5%	Wastewater Treatment \$23,530,304 10%	Administration & Regional Grants \$21,155,707 9%	Water Major Capital \$20,438,040 9%
Utility Billings \$7,272,690 3%	Other Operating \$6,298,028 3%	Transit Revenue \$4,420,893 2%	Public Safety \$18,536,647 8%	Recreation & Culture \$14,340,187 7%	Utility Services \$13,810,981 6%
Taxation for Vancouver Island Regional Library \$1,773,748 1%	Recreation Program Fees \$1,740,776 1%	Building & Other Permits \$1,597,625 1%	Planning & Development \$6,465,875 3%	Building Inspection / Bylaw Enforcement \$1,735,588 2%	Vancouver Island Regional Library \$2,773,748 1%

THE RDN IS WORKING ON MAJOR PROJECTS THAT MAY IMPACT YOUR AREA. THESE INCLUDE:

- French Creek Pollution Control Centre Project and Odour Control Upgrades
- Pump-station Upgrades
- Landfill Cell One Closure
- Mid-Island EV Charging Station Installation
- RavenSong Pool Expansion Planning
- Morden Colliery Regional Trail – Nanaimo River Crossing Design and Costing
- Parkland Acquisitions
- Coast Marsh Regional Park Weir Replacement
- South Wellington School Conversion to Community Centre
- EA B Parks and Recreation Master Plan
- Jack Bagley Community Park Sport Court and Change Rooms
- Transit Service Expansions
- Expansion of Transit Exchanges
- Dashwood Fire Hall Construction
- Replacement of Fire Equipment and Vehicles
- Electronic Data Record Management

Electoral Area G
2023 APPROVED
REGIONAL BUDGET

	2023	2022
Area G Contribution to RDN		
General Services property taxes total	\$4,122,764	\$3,808,960
Estimated RDN General Services tax rate per \$100,000 of assessment*	\$98.04	\$99.95
Average residential dwelling assessment value**	\$1,024,553	\$942,810
Average Area G General Services property tax amount***	\$1,037.41	\$963.00
Change from prior year	8.0%	

HOW THE FUNDS ARE SPENT IN YOUR AREA

Community & Regional Recreation	35%
Community & Regional Development	16%
Community & Regional Parks	12%
Vancouver Island Regional Library	12%
Administration & Regional Grants Services	10%
Public Safety & Emergency Services	7%
Transit Services	6%
Solid Waste Management	2%

NOTES: You may also have specific local taxes included on your notice for services such as your fire department. Local services taxes are applied on an assessment basis only to properties in the specific area.
* This is an estimate based on the 2023 Completed Roll values and does not include the provincial collector fee of 2.5% per cent.
** Average residential values are based on BC Assessment 2023 Completed Roll values and may vary as a result of revisions to the roll.
*** Includes Parcel Taxes of \$22.63 (2022) - \$18.68 (which are levied at the same amount for each property in the specified service area.

Summary of RDN General Services not including Local Service Areas

REGIONAL DISTRICT OF NANAIMO PROPERTY TAXES

2023 REGIONAL DISTRICT OF NANAIMO PROPERTY TAXES

REGIONS: Nanaimo, Vancouver, Victoria

Electoral Area G: RIVER'S EDGE, SAN PAREIL, FRENCH CREEK, LITTLE QUALICUM & DASHWOOD

REGIONAL DISTRICT OF NANAIMO PROPERTY TAXES
You have received your 2023 property tax notice from the Province. The Province collects taxes for schools, roads, parking, hospital and regional district services among other taxes. The Regional District of Nanaimo (RDN) receives a payment from the Province to assist with these. This payment goes directly toward the RDN services provided in your area.

SERVICES
The RDN provides a broad range of services to its residents, with the exception of road maintenance and parking. Some examples of the services provided include:

REGIONAL

- Solid Waste Management
- Regional Parks
- Regional Growth Planning
- 911 Services
- Liquid Waste Management Planning
- Operating (water/sewer) treatment
- Search & Rescue Contribution Services
- Community Courts
- Administration

SUB-REGIONAL

- Transit
- Wastewater Treatment
- Community Planning
- Economic Development
- Recreation Centres
- Community Justice
- Contribution Services
- Bylaw Enforcement
- Building Inspection
- Emergency Planning

LOCAL

- Fire Protection
- Water and Sewer Utilities
- Community Parks
- Street Lighting

NANAIMO REGIONAL HOSPITAL DISTRICT
The Nanaimo Regional Hospital District (NRHD) provides capital funding for Nanaimo Regional General Hospital, Cullen Plaza, Eagle Park Health Care Facility, William Lodge and Charesse Health Centre. The Province shares capital funding costs with NRHD on a 50/50 basis with the NRHD paying 50 per cent. Island health goals, funding from the Province, NRHD and other sources to maintain, improve and build health care facilities on Vancouver Island.

A budget of \$29.3 million was adopted for 2023 including \$4 million for minor capital equipment and projects, \$240,000 for administrative and professional fees and \$6.8 million for debt servicing for major capital projects. The budget includes capital projects planned or underway including a new Intensive Care Unit, VHC ICT Master Refresh, Child Childer System Optimization, Phase 2 Bay Machine Replacement, a new High Acuity Unit and a Meat Assembly and Delivery System.

Potential future projects include a new patient tower, cancer center and cardiac rehabilitation lab, as well as a new long term care facility. A levy of approximately \$15.00 per \$100,000 of assessed property value in 2023 is included in the budget as well as a contribution of \$18.8 million into reserves, an increase of \$1.92 per \$100,000 from the previous year. The goal is to accumulate reserves to reduce reliance on debt and pass on the NRHD to meet its partnership funding obligations for large priority projects that are currently assessed in the region.

INQUIRIES ON PROVINCIAL TAXATION AND YOUR PROVINCIAL TAX NOTICE:
Please contact a Member of Staff
Toll Free: 1-888-205-2700
Or: 250-887-9500

The property taxes include tax information and income tax grants, that tax information program, as well as other valuable tax information.
www.gov.bc.ca/tax

RDN services are included on your municipal or provincial tax notice.

Get involved RDN!

FOR INFORMATION ON HOW TO GET INVOLVED, VISIT
www.getinvolved.rdn.ca

FOR INFORMATION ON RDN SERVICES, VISIT
www.rdn.ca

or call RDN Finance
Toll Free: 1-877-667-4123
Or: 250-299-4121

REGIONAL DISTRICT OF NANAIMO

Source: www.rdn.bc.ca/financial-reports

Questions and resources:
www.Getinvolved.rdn.ca/rdn-budget-talks

REGIONAL DISTRICT OF NANAIMO SERVICES

Electoral Area G Home Tax Change

2023 Total Cost for the average Electoral Area G home (\$1,024,653) = \$1,037

